

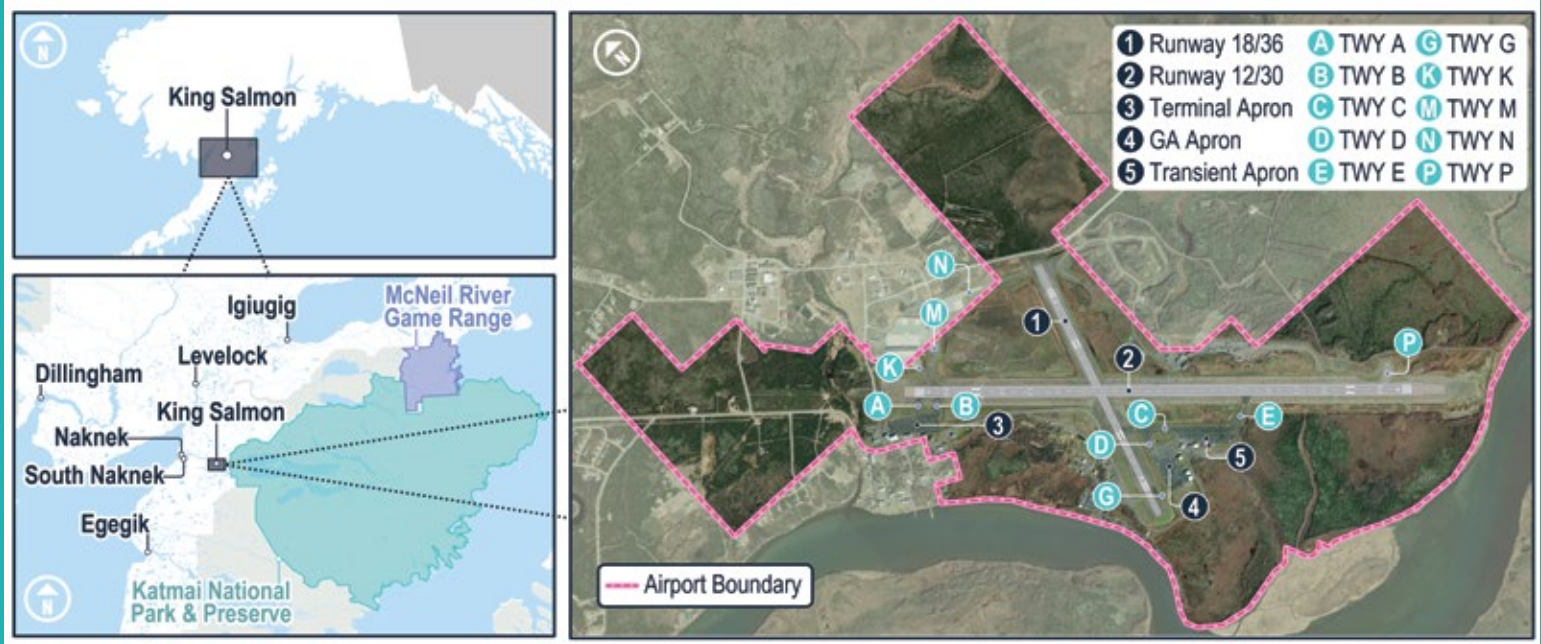


MARCH 2026

# King Salmon Airport Master Plan Update

Project #SFAPT00545

## Project Area



The community of King Salmon is located on the Alaska Peninsula, on the north bank of the Naknek River, approximately 284 miles southwest of Anchorage, Alaska. The King Salmon airport is in the DOT&PF's Southcoast Region.

## Project Overview

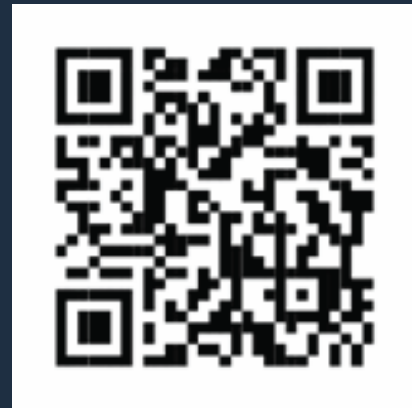
The Alaska Department of Transportation and Public Facilities (DOT&PF) is updating the Airport Master Plan for King Salmon Airport (AKN). This project involves creating an updated master plan, airport layout plan, aeronautical survey, and related services to plan for AKN's next 20 years. The process will follow FAA AC 150/5070-6B Airport Master Plans guidelines, which allow for a tailored examination of the airport and its issues. The plan will detail development and improvements recommended for AKN, which functions as a regional hub, floatplane base, and military training airport.

AKN supports 20 communities in the Bristol Bay and Lake and Peninsula Boroughs and is a key access point to Katmai National Park and McNeil River State Game Sanctuary. It is used for Air Force training and supports year-round flights by Alaska Airlines, Grant Aviation, and other passenger and cargo services. Aviation activity triples in the summer due to fishing and tourism.

Facilities include an 8,901-foot main runway, a 4,017-foot crosswind runway, three aprons, Air Force facilities, and a 4,000-foot water lane on the Naknek River. The Airport Master Plan Update will determine what AKN needs to support current and future aviation activity and remain a vital transportation hub in the region.

## How to Get Involved

Visit our website to view project information and documents, join the mailing list to receive updates, or submit comments to the project team.



Scan the code to view the project website:

[www.KingSalmonAirport.com](http://www.KingSalmonAirport.com)

# Schedule



## Contact

**Courtney Kreis, CM**

Alaska DOT&PF  
Project Manager

**Melissa Osborn, A.A.E., ACE**

DOWL  
Project Manager

**Talli Vittetoe**

DOWL  
Public Involvement

To contact the project team, please email [KingSalmonAirport@dowl.com](mailto:KingSalmonAirport@dowl.com) or call DOWL Public Involvement at (907) 562-2000

*It is the policy of DOT&PF that no person shall be excluded from participation in or be denied benefits of any and all programs or activities we provide based on race, color, sex, age, disability, or national origin, regardless of the funding source, including Federal Transit Administration, Federal Aviation Administration, Federal Highway Administration, Federal Motor Carrier Safety Association and State of Alaska funds. Persons who believe they may have experienced discrimination in the delivery of these programs or activities may file a confidential complaint with <http://www.dot.state.ak.us/cvlrts/forms/DiscrimComplQuest.pdf>. For individuals requiring TTY communications, please contact Alaska Relay at 7-1-1 or 1-800-770-8973.*

